

5

The Mango
Industry Food
Safety Training Kit

Handling, Use,
and Storage of
Agrochemicals
Farm





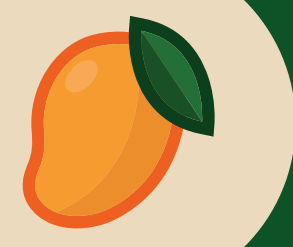
The Mango Industry Food Safety Training Kit

5 Handling, Use, and Storage of Agrochemicals



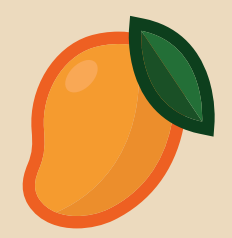
Introduction





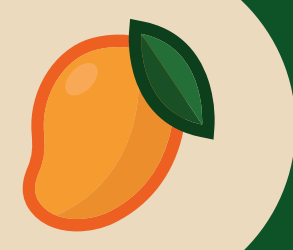
Why Are We Here?





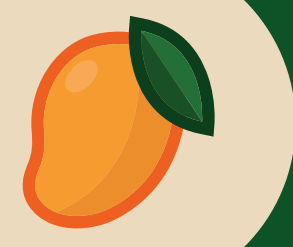
Maximum Residue Limits (MRL) What Is It? How Do We Measure It?





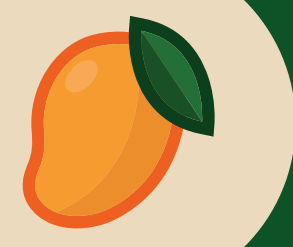
Maximum Residue Limits (MRL) What Is It? How Do We Measure It?





Consequences of the Excessive Use of Agrochemicals





Food Contaminated with Chemicals





What Are Agrochemicals?

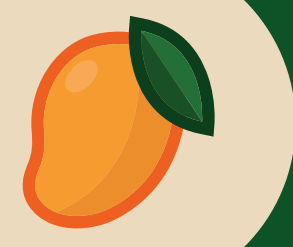
FUNGICIDAS
→



FUNGICIDAS
→

INSECTICIDAS
y/o
ACARICIDAS
→

INSECTICIDAS
y/o
ACARICIDAS
→



Soil Amendments or Fertilizers

4 Si la persona ingirió producto y esta consciente, provoque el vómito, estimulando la garganta con el dedo. No provoque el vómito si está contraindicado en la etiqueta del producto.

5 El paciente no debe tomar sustancias grasosas como aceite, leche, huevo porque se absorbe más rápido el producto.

6 Si el producto penetró a los ojos, manténgalos abiertos y lávelos con agua limpia durante 15 minutos.

7 Si el paciente presenta convulsiones, evite que se lesione, no lo debe sujetar.

8 Lleve al médico el envase o la etiqueta del producto que ha causado la intoxicación.

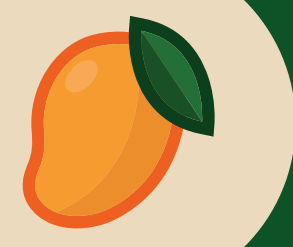
AGROQUIMICOS
CRUCADOS
↓





Pesticides

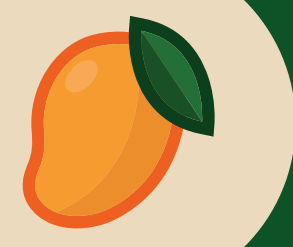




Pesticides - Insecticidas

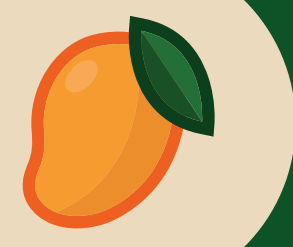
INSECTICIDAS
Y/O
ACARICIDAS
➔





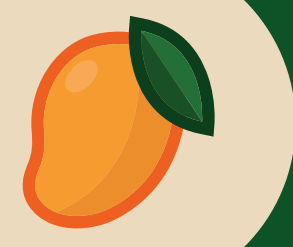
What Do We Achieve Through the Correct and Appropriate Use of Agrochemicals?





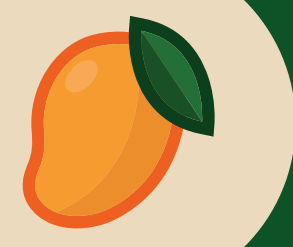
Personal Protective Equipment (PPE)





Personal Protective Equipment (PPE)





Personal Protective Equipment (PPE)





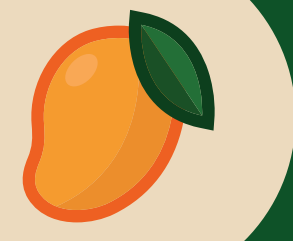
Preparation of Agrochemicals





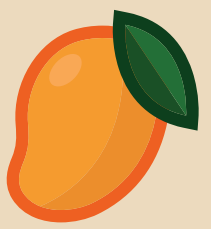
Preparation of Agrochemicals





Application





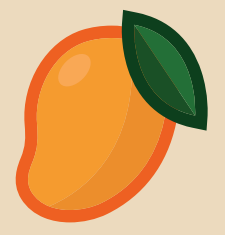
Precautions Before Application





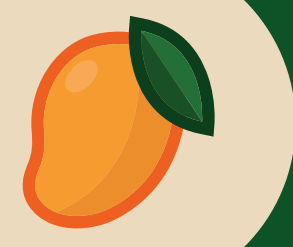
Precautions Before Application





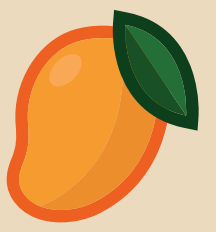
Application Equipment. Knowledge and Correct Use





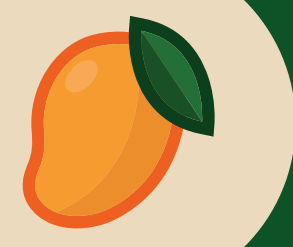
Post Application Hygiene. Personnel and Equipment





Post Application Hygiene. Personnel and Equipment





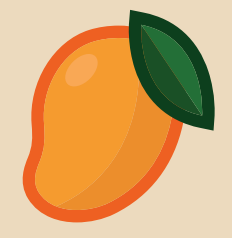
Triple Wash of Empty Containers





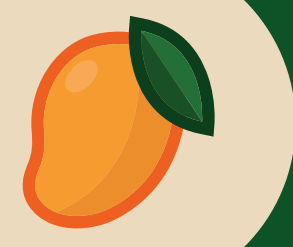
Post-Triple-Wash Processing of Containers





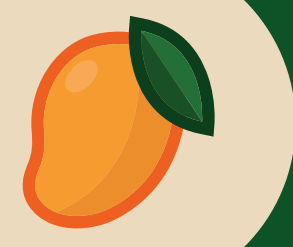
Handling of Surplus Formulation





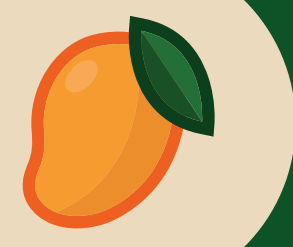
Safety Measures in Handling and Application





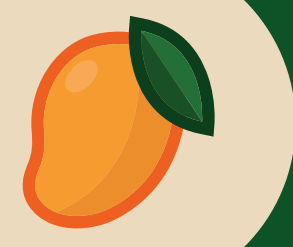
Safety Measures in Handling and Application





Safety Measures in Handling and Application





Re-Entry Time





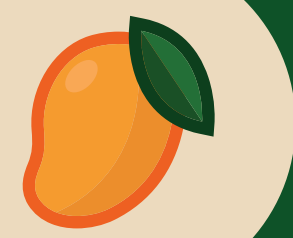
Harvest Interval





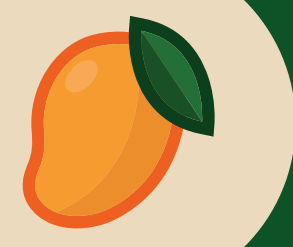
Physical Status of the Areas and Equipment





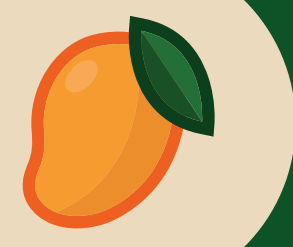
Facilities for the Good Handling of Agrochemicals





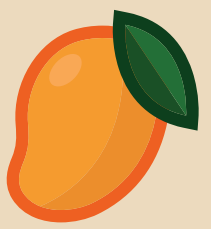
Good Documentation Practices





Good Documentation Practices





What Have We Learned?

